

PRECISION-PRO SERIES

HIGH RESOLUTION | DIRECT VIEW LED CABINET



WWW.TINNOX.COM.AU | © UFL TECHNOLOGY PTY LTD. All rights reserved.
All specifications and descriptions are subject to change without prior notice. Unauthorized reproduction is strictly prohibited.

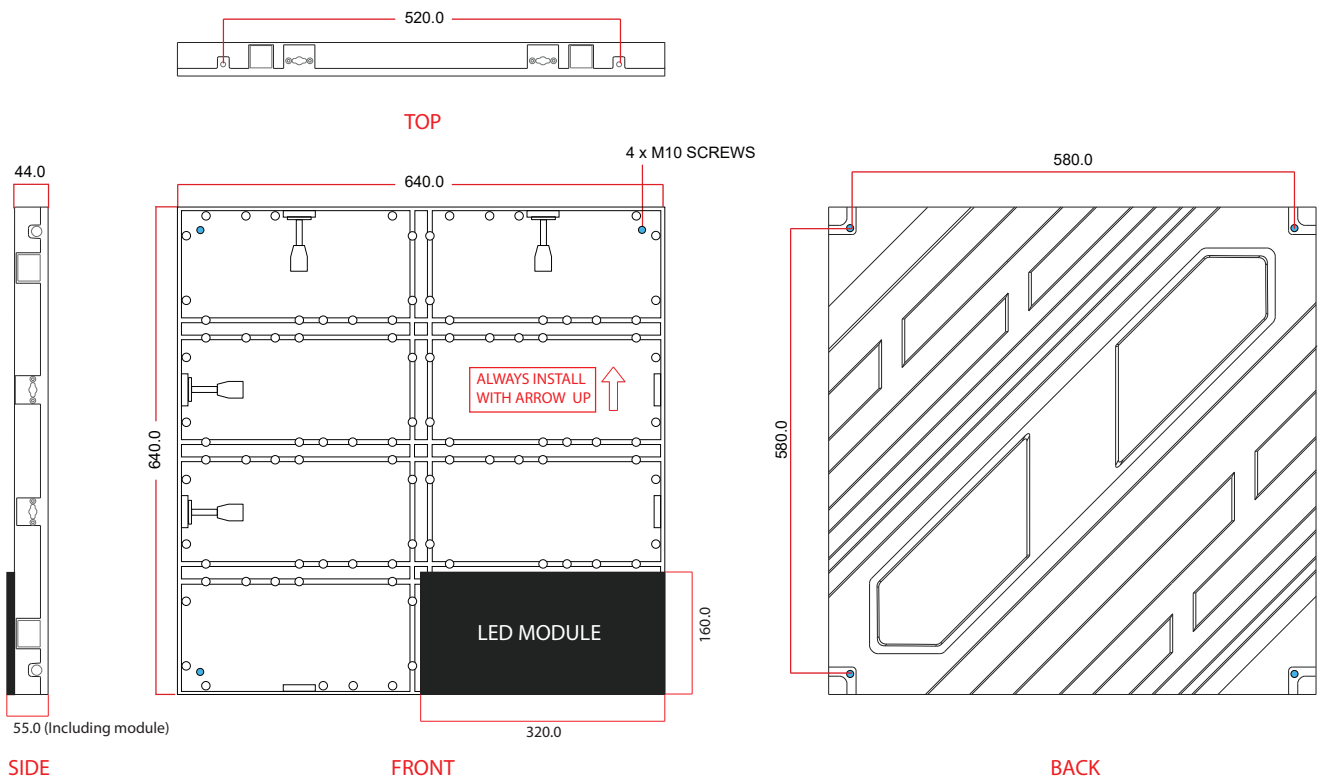
TINNOX

SPECIFICATIONS

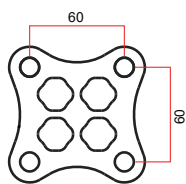
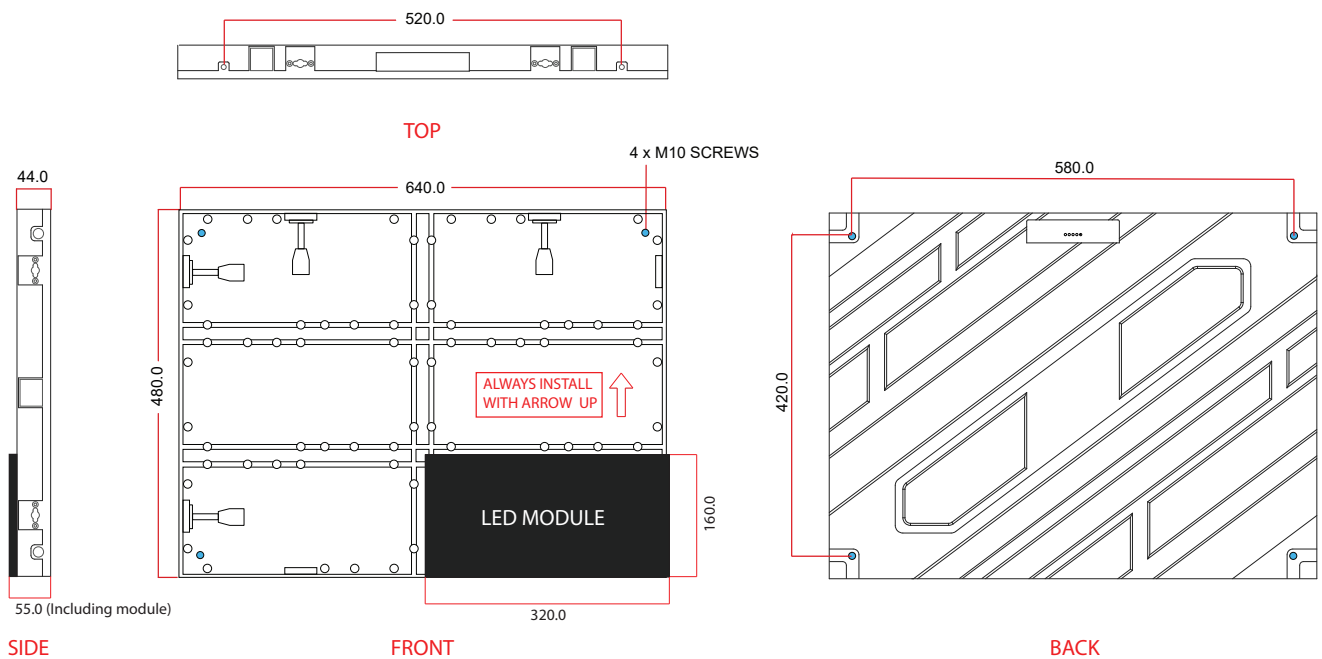
Pixel pitch (mm)	1.25	1.53	1.86	2.5
Pixel configuration	1R1G1B			
Led lamp (GOB Black LED)	SMD1010	SMD1212	SMD1515	
Pixel density (dot/m ²)	640000	422500	288888	160000
Module size (W×H) mm	320x160			
Module resolution (W×H) dot	256x128	208x104	172x86	128x64
Cabinet size (W×H) mm	640x640 & 640x480			
Cabinet material	Diecast aluminum			
Cabinet weight	20 (kg/m ²)			
Scan mode	1/64	1/52	1/43	1/32
Gray scale	14-Bit			
IP Rating (Ingress protection)	IP30			
IK Rating (Impact Protection)	IK10			
Maintenance	Front / Rear maintenance			
Brightness	700 - 900 Nit			
Viewing angle	160° H / 140° V			
Contrast ratio	10,000:1			
Refresh rate	3840Hz			
Input power	AC 110V - 240V			
Max. Power consumption	≤650 (W/m ²)			
Ave. Power consumption	≤200 (W/m ²)			
Working temperature	-20 °C ~ +80 °C			
Lifetime	100,000 hrs (At 50% Brightness)			

DIMENSIONS

640x640MM CABINET



640x480MM CABINET



CONNECTING PLATE